

Palm fronds galore!

PLA leads effort to clean up area by Barnes Tennis Center

On December 5, 2009, about 50 volunteers proved the value of collaboration when representatives from Point Loma Association, The Rock Church, and Barnes Tennis Center converged on the site between Nimitz Blvd. and Barnes Tennis Center.

The project got its start when a representative from The Rock Church contacted the PLA about partnering on a community project. PLA Beautification Team members Karen Davis, Ron Brooks and Cecilia Carrick then met with church representatives to see what they had in mind. To Karen Davis, the area adjacent to Barnes Tennis Center – home to numerous homeless encampments, trash, weeds, and overgrown bushes – was an obvious choice.



Bowman (in blue) and other workers wrestling palm fronds

The date was set for December 5, but during the previous week, Russell Bowman, owner of Sunrise Landscape and Tree Services, was at the site with his men and their powerful chain saws trimming the palm trees and shrubbery and making huge piles of fronds and branches. “This truly would not have happened without [them],” said Cecilia.

“The piles of stuff that came off the palm trees was incredible.” What’s more incredible is that

Bowman donated all the work. “He paid his men to come,” said Cecilia. “These are highly skilled guys – they have to climb tall trees to do their work.”

Not only did Bowman donate the work – he donated his chipper. When the volunteers arrived, their main job was to make big piles of the palm fronds, shrubbery and debris for the chipper. “There was a lot of stuff to grind down,” said Cecilia, “it was pretty huge and nasty work.” At one point, Bowman’s chipper reached its limit. Chipping had to be halted while workers dismantled the chipper and unblocked it. There was so much material that the work wasn’t finished that day. Bowman’s crew had to come back the following week.

(continued on next page)



Nasty work indeed! That’s Dorothy Lord behind all the dirt!

January Meeting at UPSES Hall

Due to construction at The Bali Ha’i, next month’s PLA meeting will be held at the UPSES Hall, located at 2818 Avenida de Portugal. Same time - 7:30 a.m.

In addition to regular PLA business, representatives from the City of San Diego’s Rosecrans Corridor Mobility Study will present their study findings thus far.

From the City’s web site:

“The Rosecrans Corridor Mobility Study is a nine month project that aims to identify transportation improvements within the project study area. The goal of the project is to develop a plan that improves pedestrian access, bicycle facilities and accessibility, transit operations and facilities and traffic flow. During the project, an extensive evaluation of existing and forecast future operating conditions will be conducted for intersections and roadway segments between Taylor Street and Kellogg Street.”

If you want to do some homework before the meeting, check out the web site for the study at: www.sandiego.gov/engineering-cip/rosecransstudy/.

Our Mission:

PLA is an organization of residents and businesses committed to improving the quality of life of Point Loma through beautification, education, charitable activities and civic collaboration.

Chairman's Message



By the time you all read this, Christmas and New Years will have passed, but I thought I'd to send out a little Christmas

Happy New Year message anyway.

For some reason, we're not supposed to say "Merry Christmas" anymore. Businesses are not supposed to send Christmas cards; they're supposed to send "Holiday" cards. Too many people are offended by "Merry Christmas."

That's always amazed me. How can you be offended by Merry Christmas? Because regardless of your religious beliefs, there's something universal about the Christmas spirit.

Is peace on Earth good will towards men a bad thing?

As tough as the economy is right now, the one thing we can spend is a moment to think of family and friends. Things cost money. Feelings, thoughts and imagination are free. To me, that's where the true meaning of Christmas really lies.

I realize this message is sounding a little sappy. Maybe as I get older the sappy just sets in. It might make the "Mean Green Team" happy to know that the chairman is full of "sap." My wife would argue I'm full of something else.

When I look at what has been accomplished in this community over the past year by hundreds of volunteers, I have to believe in a little Christmas spirit.

Because in addition to the Point Loma Association, we are fortunate to have several organizations like the Rotary Club, the Optimists, the Lions, The Portuguese Hall and all of the Portuguese organizations, The Thursday Club, the Garden Club and so many more all working to improve our community.

Congratulations to all of the organizations and to all of your volunteers for spreading a little good

(continued on the next page)

(continued from page 1)

Special thanks to:

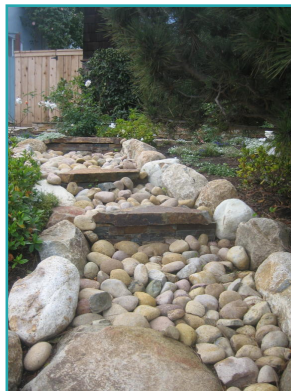
- Russell Bowman and his staff from Sunrise Landscape and Tree Services
- Steve Bickham with Barnes Tennis Center, who provided work event oversight, tools, plastic bags and water
- Rene Colon with The Rock Church, who provided volunteers, leather gloves, food and expert landscape support, and encouraged church members Russell Bowman and Ramon Alvarez to provide landscape support and food
- PLA's Beautification Committee, who led the project and provided tools, plastic bags, volunteers, one palm tree and dessert!
- Ramon Alvarez with Los Primos Mexican Food Restaurant (Liberty Station, 2556 Laning Rd. Ste. B 101) for donating rice/chicken bowls with fresh salsa for lunch.
- Chick-fil-A (3570 Sports Arena) for providing gift coupons for one free chicken sandwich to all workers. The gift certificate had the PLA logo with the words "On behalf of Chick-fil A and the Point Loma Association, thank you for volunteering to help our community."



Great work!

Garden Award

By Betty Allman and Judy Garrett



A TOTALLY NEW LOOK: The owner at 738 Temple Street removed over 1,000-square-feet of ivy and replaced it with beautiful stone pathways, water-wise landscaping and a stone dry creek. A broad new cement and stone walkway with steps was constructed, complimenting the addition of stacked stone on the exterior or front of the home. Several "very old" camellia plants were successfully re-located as well as many of the owner's heirloom rose bushes. Efficient new outdoor lighting compliments the black pine tree in the middle of



the yard next to the stone waterfall. Many of the new native perennials will provide color throughout the year.

Want to nominate a home with a lovely garden?
E-mail Judy Garrett at judy-garrett@cox.net.

No trucks after all!

In the Fall newsletter, we reported that trucking methane gas through the streets of Point Loma was "still on the table." Here's an update from the office of City Councilman Kevin Faulconer.

"On December 8, the San Diego City Council voted unanimously to amend a contract to change how the gas will be transferred once this project begins in 2011.

The original plan called for using trucks to haul compressed natural gas – 85 percent methane and 15 percent carbon dioxide – from the treatment plant to

two local sites where it would be used to supply ultra clean fuel cells that will generate renewable electricity. Numerous residents expressed concern about the safety of the trucks.

I worked with Point Loma residents John Pedersen, Jim Gilhooly and others to develop a better plan, which took effect with today's council action. Methane gas will still be captured from the treatment plant, but it will be moved through existing SDG&E fuel lines. Trucks will not be used.

This first-of-its-kind project is a significant win for the environment, Point Loma residents and the City. It's expected to eliminate the release of 1.1 million cubic feet of global warming gases each day and generate a small amount of revenue for the City.

Today would not have been possible without the hard work Point Loma residents devoted to this issue.” – *Kevin Faulconer*

Beautification update

In addition to the HUGE cleanup adjacent to Barnes Tennis Center, your Beautification Committee has been hard at work on these projects:

Newsracks Ron Brooks created a comprehensive list of newsracks in violation and sent it to Mike Wisnieski of Code Compliance. So far, Mr. Wisnieski has removed five empty 'Compass' newsracks and will soon remove seven adult periodicals along Rosecrans between Nimitz and Talbot. In addition, Mr. Wisnieski is recycling the metal racks, with proceeds going to the Code Compliance program. Thanks go to Mr. Wisnieski for his ongoing efforts and to Ron for preparing a list of empty racks around the community.

Code Compliance Updates The bench advertising in front of Dana Middle School has been removed and replaced with a 'green leaves' sign. Code Compliance determined that City code prohibited advertising in residential areas. Other ads located in residential areas will be targeted for potential removal.

Trash receptacles Several of PLA's 20 black trash receptacles have peeling paint. The PLA has four new receptacles in good condition. It was suggested that, as a minimum, the worst looking receptacles be replaced with new ones. After contacting a few companies and being alarmed by the cost, the Beautification Committee consulted Bruce Cook, who developed a protocol to rehab PLA's trash receptacles in a cost effective manner. Bruce will contact scout leaders to determine if there is interest in adopting this as a scout community service project.

Nine Trees Planted Thanks to Ann Fotheringham for donating three Catalina Cherry trees to the PLA. One was planted at Point Loma Park and two were planted at Tennyson Triangle. Two new Torrey Pines and two native oaks were planted along the Cañon Street path. Two Canary Island Pines were planted at the Nimitz Median. All work was performed by Moises Sanchez and his Total Green Landscape employees.

Piles and piles of wood chips No - it wasn't the "rogue mulchers." About two months ago, the Beautification Committee received four very large piles of wood chips that were originally meant to be placed around the base of our trees on West Nimitz. After two workdays and a few sick workers, only one of the piles had been flattened. Cecilia, Beautification's very own contractor extraordinaire, resolved the problem by hiring a bobcat and driver to flatten the piles in one painless afternoon.

Chairman's Message, continued

will through Point Loma and making it a better place to live and work.

So, even though Christmas has passed, let people know you wish them well. Give them a Merry Christmas moment with a little Christmas spirit. And think about joining or volunteering to help with one of our local organizations.

I hope you all had a Merry Christmas and have a happy and prosperous New Year.

– Tony Calabrese

Join the PLA Board of Directors!

The PLA has three openings on the Board of Directors. Why serve?

- **Be in the know.** As a well respected organization with strong ties to federal, state and city governments, the Port District, the Navy, the school district, and the Peninsula Community Planning Board, the PLA Board is the first to find out about major happenings in the Point Loma community.
- **Find out first hand what the PLA does:** Planting and maintaining gardens and literally hundreds of trees throughout the Point; Summer Concerts Series; Graffiti Abatement; Annual Dinner; Bus benches and trash receptacles; Utility boxes; Civic collaboration. Choose your favorite project and lend your time and energy!
- **Because the PLA makes a difference in the Point Loma community.**
- **Because as a PLA Board member, YOU can make a difference.**

To nominate someone or to express your interest in serving, e-mail Tony.Calabrese@pointlomabank.com or call Tony Calabrese at (619) 243-7901.



Banner project

By Maureen Summers

You may have noticed the newest crop of San Diego Hospice banners in the Village – but you may not know that the PLA manages the banner district.

In addition to reminding us of upcoming events, celebrating local talent, and providing a sense of community, the Banner District is also a source of income to the Point Loma Association. We charge the typical community group or business about \$500/month to rent the poles. The District covers Rosecrans from Upshur to Quimby, Scott Street from Talbot to North Harbor Drive and Shelter Island Drive from Rosecrans to the traffic circle.

We have two community banners, the Lighthouse Banner that proclaims, "Welcome to Point Loma, A Great Place to Be," and our flower/Spring time banner that also says "Welcome to Point Loma." Many organizations have used the District, including the NFL, the San Diego Zoo, the Mengei Museum, the Peninsula Chamber of Commerce, the San Diego County Fair, and most recently, San Diego Hospice.

If you have a business or community organization that would like to inform the community in this novel way, contact Maureen Summers at (619) 550-1880.



Thanks to Bob Sherman for putting our signs into the holiday spirit!

Ed's Triangle

By Kerri De Rosier

A few months ago, The Mean Green Team endeavored a cleanup of what is affectionately known as "Ed's Triangle." It's named for Ed Streicher, who goes down there 2-4 times a month to turn on the irrigation and pick up trash. "Ed's Triangle" is located on Nimitz Blvd. right before the onramp to the I-8, as you're heading north. I remember shaking my head at Karen Davis and saying, "it's such a big area - it must be overwhelming."

I just took a grant writing class and decided that I'd get a lot more out of it if I actually wrote a real grant application. Thinking back to my conversation with Karen, I decided to see if the PLA could get grant funding to pay for beautifying this area.



Ed's Triangle or Median 4

Some questions had to be answered first. I contacted Karen Davis and asked if she knew anything about the area. This is what she said:

- "People like to go driving through the area. That is why we put in the logs - it keeps cars out. I figure there will have to be some kind of barrier before we put lots of money in the area. Suggestions have included a fence or boulders.
- The Ocean Beach Community Development Corp. (OBCDC) prepared plans to landscape the area several years back. It was included with the plans that were implemented on the much smaller medians that go to Sunset Cliffs. The larger triangle would have cost them much more money than they could afford, so the landscape plan was put aside.
- The property is City of SD property, so permits would be required before anything could be done. Park and Rec. has oversight responsibility.
- There is already water to the site. It was put in place by Hugh Story years ago. The water comes from the park with water going to each of the trees. Any plan for native (or any other landscape plants) would require expansion of the irrigation system.
- There are other city utilities in the area, so any plan would have to take them into consideration. I think that there is a storm drain and electrical systems underground."

It was time for a meeting. I made some contacts to determine the current members of the OBCDC, and called a meeting with them, Karen Davis, Ron Brooks, Cecilia Carrick, and Stan Nadel. Here's what we found out:

- There were plans prepared for this project in 2004 as part of the Ocean Beach Gateway Project. The area is formally called "Median 4."
- The OBCDC has no funds to move this project forward, and would be more than happy for the PLA to take it on! However, they are more than willing to attend meetings and help out.
- We don't know if the current plans are still valid. We're planning a meeting with the original City person involved with the project to find out. The PLA would like to ensure that all plantings are drought-tolerant.
- This is going to cost a lot of money! Suggestions for grantors are welcome! e-mail kerriderosier@gmail.com.

Utility Box cleanup

By Kerri De Rosier

One of the problems with having a successful utility box program is that there are a lot of boxes to maintain! Some of the boxes painted in the very first phase were in need of some TLC.

Thanks to Cecilia Carrick and Linda Jessop Fox for joining me on a Saturday morning and scrubbing down the boxes. It was surprising what could be done with a scrub brush and water! The chalky white oxidation washed right off! After the scrub down, we applied a varnish that will hopefully cut down on fading – and make graffiti easier to wash off.



Welcome new members!

Welcome two new board members: Joshua Cohen and Megan Ekhart.



Megan Ekhart is the Director of Community Outreach and Governmental Relations for PLNU. She handles neighbor and local community issues as well as issues at the State and Federal levels, and represents PLNU at community organizations including the PLA, the SDR Chamber of Commerce, and the Sunset Cliffs Recreation Council. Megan is also tasked with raising PLNU's profile in the community, which "is probably the most fun part of my job," said Megan.

"As a PLA board member, I would like to consider ways to get young people more plugged in and involved. I think that can happen through education of what PLA does, as well as figuring out a way to make it interesting and important to their lives. I would love to plug more PLNU students in.

"I love the community of Point Loma. I enjoyed living here when I was a student at PLNU, and I am happy to be back now working in the community. I appreciate the investment that the neighbors of Point Loma have made into their area, and I am excited to be a part of it."



Joshua Cohen is the Branch Manager of San Diego National Bank in Point Loma. He lives in Rancho San Diego and is a graduate of SDSU. Originally hailing from Connecticut, Josh has lived in San Diego since 1992.

Josh is married and has a one-year old son. "My wife and I love the Point Loma / Ocean Beach community and have spent many days walking, eating and enjoying what we like to call paradise," said Josh. "My goal as a PLA board member is to ensure that the beautification goals of the founders of the PLA, as well as our current members, continue to benefit all who live and visit the wonderful community of Point Loma."

Save the Date!

The Point Loma Association Dinner is on May 27 at the Kona Kai. Want to help? Call Karan Cooper at 224-0858 or e-mail karancooper@cox.net.

Around Town

The Wine Pub opens

Open just six weeks, The Wine Pub at the former Point Break location on Shelter Island Drive is already hopping – or cork popping, as the case may be.

"We waited for a place like this, and we finally just did it ourselves," said Sandy Hanshaw, co-owner with her husband, Andy Hanshaw. The couple has lived in Point Loma for eight years. Getting laid off from her job in hotel and convention sales spurred Hanshaw along. "I had this idea in my head for 12 years; I sat down and wrote a business plan."

Hanshaw's plan included offering something different from other wine bars. "I want excellent customer service to be the cornerstone of what we do," said Hanshaw, "we want it to be like a family here."

Chef Liz Baird, formerly of Jack's in La Jolla, is cooking up what Hanshaw calls reasonably priced "adult comfort food." The menu features paninis, cheese and bread platters, soups, spreads and desserts. Customers can buy wine by the glass or buy a bottle and pay a \$5 corkage fee.

"A lot of people stop in to get a quick bite and a glass of wine before going to a play," said Hanshaw. In fact, the pub hosted the actors of *A Tuna Christmas* on opening night.

With her experience in hotel and convention sales, hosting private parties is "second nature" to Hanshaw. She built out the back patio for just that purpose, and it has paid off. Mid-December, Hanshaw had four private parties in one week.

The Wine Pub hosts Happy Hour Sunday through Thursday with a choice among two whites and two reds for \$4/glass, or \$4 beers. They are open until 10:00 p.m. on weekdays, and 12:00 p.m. weekends. The pub is located at 2907 Shelter Island Drive, #108. Info: 619.758.9325
www.TheWinePubSD.com



The new outdoor patio

(More Around Town news on next page.)

Around Town, continued



Point Loma Farmer's Market at Liberty Station

After a long respite, Liberty Station is again home to a Farmer's Market. The market, with over 50 vendors, has a wide range of fresh vegetables, fresh fruit, gourmet foods, breads, olive oils, pesto sauces, hummus and pita, salsa, honey and more.

The "Artisan Fair" features unique items from all over the world and especially handmade and locally crafted products. While you're shopping, grab lunch from one of the food vendors.

To sign up for the market's e-mail newsletter, go to:
www.pointlomafarmersmarket.com.

PL Marketplace Update

Let there be yogurt! Cupofyo is slated to open March 2010 around the corner from Peet's at Point Loma Marketplace. The frozen delights void is being filled at long last!

In addition, Point Loma Cabrillo Pharmacy is planning to open its doors in early January, according to Michael Saad, who also owns Point Loma Shelter Island Drug. Next to the pharmacy will be a dry cleaning business.

Want to advertise your business and support PLA?

If you are a PLA member who also owns a business, you can offer discounts to PLA members. In return, your business will be listed in this publication, on our web site, in our e-blasts, and in our membership literature.

For a current list of discount offers, check out our web site at www.plaweb.org.

What an "After!"

In the Fall issue, we reported on the progress being made on the storm drains at La Playa Cove. Following is a letter to Councilman Kevin Faulconer and Matt Awbry from Dave and Jean Purcell, neighbors who persisted for years to replace the drains and make the area safe.

Dear Kevin and Matt,

I wanted to express appreciation for all the work that has been done here at La Playa Cove. All involved have been cooperative and helpful during the process required to repair and clean up the broken storm drain and then repair the path. York Engineering folks have been particularly responsive and cooperative good neighbors, and most who live here are appreciative of their professionalism, efforts and good will.



A picture from the Fall 2007 PLA newsletter.

We asked for many special things during the repair: coloring the concrete so it would blend with the surrounding area; wire instead of horizontal tubes on the safety fence, vegetation to surround the concrete pad to soften the view; decomposed granite on the path and leveling the potholes and uneven parts while leaving the meandering, rolling parts of the path natural. York did it all, and did it well. The DG was blended with earth to give it all a natural look too. Professionals from the City were always helpful as if they were our neighbors. We thank them for their efforts and support before and during the repair as well.



What it looks like today!

I walked the path last night and this morning and asked folks how they liked the changes. All thought they were terrific! Ladies walking their dogs three abreast and able to chat. Folks on bicycles able to pass freely without getting off their bikes or getting stuck in soft sand pot holes. While it is to be expected that there will be some who complain of change, I think the majority who live here are delighted with the improvements.

A few days ago I met a lady walking the path who had a Life Alert button around her neck. She was ninety-eight and walking the path alone. What has been done will make the path a safer place for her and others like her. Cleaning up the broken pipes will no longer be a safety hazard for children.

A special thanks to you Kevin for following through on your commitment three years ago; to get the job done in spite of what sometimes appeared to be impossible barriers to success.

Thanks to all for what has been done. We are your appreciative neighbors and grateful for the improvements.

Warm Regards,

Dave and Jean Purcell

Point Loma Native Plant Garden at Risk

By Richard Dhu, Program Manager, The San Diego River Park Foundation

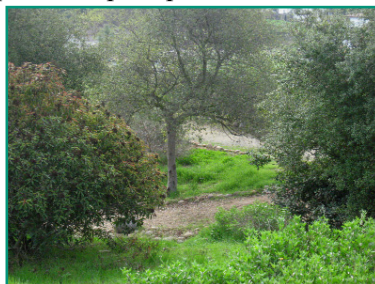
In these difficult economic times the news is full of jobs being lost, businesses closing and budget cuts in city services. Even city parks and gardens are not immune and depend more than ever upon the generosity of the community to remain as healthy and viable places for the public to gather and enjoy the outdoors.



On the border of Point Loma and Ocean Beach in the area known as Collier Park there is a truly wonderful gem, the Point Loma Native Plant Reserve Garden. The "Garden" is a city owned park that houses a wonderful collection of rare and endangered plants and trees native to our region. This special public open space offers a rare glimpse into our natural history before San

Diego became a land of palm trees and grass lawns. Many of the plants at the garden were utilized by Native Americans for food, clothing, medicine and religious ceremonies. Many species of birds, insects and mammals are attracted by the plants found at this garden.

The Friends of the Point Loma Garden is an all volunteer organization dedicated to the garden and to San Diego's natural ecology. They support operations at the garden and give students of all ages hands-on opportunities to learn about the environment and stewardship of our open spaces. Like so many public benefit organizations, this organization is facing an uncertain future. "We are required to maintain liability insurance, pay for tools and supplies and other expenses," said Joel Kalmonson, president of the garden and a regular volunteer. "We depend upon the generosity of the public and our volunteers to continue to our work here and provide a clean and healthy garden for all to enjoy. The City does not have the staff or resources to take care of the garden, which is why volunteers had to step in to keep it going."



The Friends of the Point Loma Garden is holding a membership drive in hopes of building support for the garden. Memberships start at just \$35 per year and go a long way toward helping to keep the Point Loma Garden healthy and vibrant for all to enjoy. For more information about how you can help, call (619) 297-7380 or e-mail richard@sandiegoriver.org. Checks can be made payable to:

The San Diego River Park Foundation
c/o The Point Loma Garden
PO Box 80126
San Diego, CA 92138-0126

Peninsula Community Planning Board

Meets third Thursday,
6:30 – 9:30 p.m.
Pt. Loma Library
3701 Voltaire Street

Ocean Beach Town Council

Meets fourth Wednesday,
7:00 p.m.
Masonic Center
1711 Sunset Cliffs Blvd.
Jim Musgrove,
jimmusgrove@mac.com

Midway Planning Advisory Committee

Meets second Wednesday,
2:00 p.m.
Peninsula Community
Service Center
3740 Sports Arena Blvd.

La Playa Trail Association

Meets second Tuesday,
2:30 p.m.
San Diego National Bank
1075 Rosecrans St.
Charles Best, 223-3418

Point Loma Association

Meets second Wednesday,
7:30 a.m., Bali Ha'i
Beautification:
First Tuesday, 8:00 a.m.
San Diego Yacht Club

COMMUNITY ORGANIZATIONS

COMMUNITY CALENDAR

11th Annual UPSES Crab Feast

January 30, 5:00 p.m. Social Hour; 6:30 p.m. Dinner. Dinner Tickets \$40/person; children (ages 4-12) \$10. For tickets or information, contact Andrea Calabrese (858) 505-2934 or Dinisa Valadao (619) 243-7903. UPSES Hall – 2818 Avenida de Portugal

The Point Loma Rotary Club 7th Annual Comedy Cavalcade: Friday, February 5, 8:00 p.m.

Benefitting local and international Rotary Service Projects. Tickets available at Point Loma Community Bank or by calling Tony Calabrese at (619) 243-7901. Some adult content; recommended age is 18 or older. UPSES Hall – 2818 Avenida de Portugal

The **Point Loma Garden Club** has meetings and workshops at the UPSES Hall on the second Wednesday of every month at 10:00 a.m. For information, go to www.plgc.org.

January 13 – Tips for replacing old water-hungry landscapes; **February 10** – Recipes and ways to grow food in your garden; **March 10** – How to save your prized flowers, vegetables, and shrubs from slugs, snails, grasshoppers, and other pests.

UPSES Hall
2818 Avenida de Portugal

Point Loma Native Plant Reserve work parties: 1st Saturday and 3rd Sunday of each month, 9:00 - 11:00 a.m.

Volunteers are needed to help water and care for this unique public park. Corner of Mendocino Blvd. and Greene St. For information, e-mail richard@sandiegoriver.org.

OASIS Programs at the Library:

All programs below are on Wednesdays from 1:00 - 3:00 unless otherwise noted.

January 13, 6:00 p.m. – Frank Lloyd Wright's Architecture and Life; **January 20** – Step into a better body with the right shoes; **January 27** – Current Supreme Court Decisions; **February 3** – Television news correspondent Gary Shepard shares stories about a sailing trip that took him from Los Angeles to the U.S. Virgin Islands; **February 17** – Israel: Beyond the Conflict; **March 3** – History of San Diego architecture, sculpture and public murals; **March 17** – Author and storyteller Jack Innes shares legends from San Diego's history; **March 24** – Travel with Barry & Corrine: Scotland & England

For information, contact Christine Gonzalez at (619) 531-1539.



PRSRT STD
US POSTAGE
PAID
PERMIT # 1959
San Diego, CA

PO BOX 60212
San Diego, CA 92166-0212
Return service requested

Have you moved? Let us know!
E-mail: Contact@plaweb.org



www.plaweb.org



*You're more than a number.
We're more than a bank.*

619-243-7901
www.pointlomabank.com



Officers

Tony Calabrese, Chair
Andy Hollingworth, Treasurer
Elise Streicher, Secretary
Bill Klees, Past Chair

Board of Directors

Patti Adams	Megan Ekard
Larry Baumann	Linda Jessop Fox
Ron Brooks	Klonie Kunzel
Cecilia Carrick	Maureen Maringer
Joshua Cohen	Barbara Morton
Karan Cooper	Melanie Nickel
Tricia Craven Worley	Martha Phillips
T. Morgan Hollingworth	Maureen Summers

Chairpersons

Beautification: Ron Brooks
Membership: Patti Adams

Newsletter editor: Kerri De Rosier
kerriderosier@gmail.com



Licensed & bonded. Lic. # 822370

Since 1985

www.sandiegotreetrim.com